

MONTHLY MEMBERSHIP PROGRESS REPORT

LOCATION INDIA

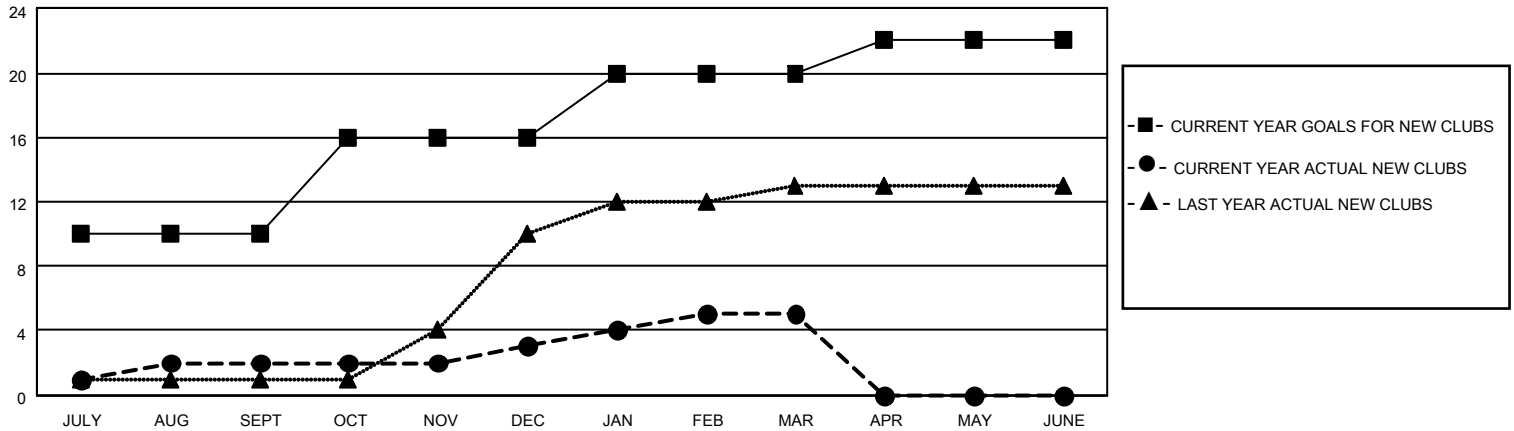
District 318 B

Results as of: 3/31/2022

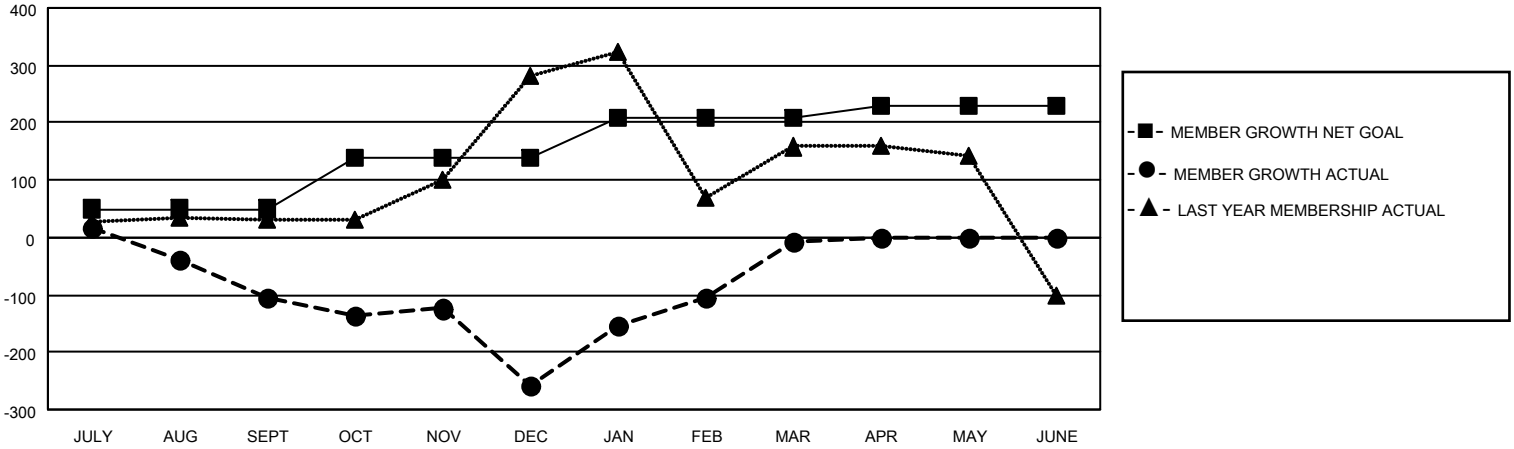
Clubs			
RESULTS FOR 2021-2022			
QUARTER	NEW CLUB GOAL	NEW CLUBS	DROPPED CLUBS
JULY/AUG/SEPT	10	2	10
OCT/NOV/DEC	6	1	7
JAN/FEB/MAR	4	2	2
APR/MAY/JUNE	2	0	0

Members			
RESULTS FOR 2021-2022			
QUARTER	MEMBER GROWTH NET GOAL	MEMBER GROWTH ACTUAL	DROPPED MEMBERS ACTUAL (including transfers)
JULY/AUG/SEPT	50	114	213
OCT/NOV/DEC	90	130	265
JAN/FEB/MAR	70	464	122
APR/MAY/JUNE	20	0	0

GOALS AND ACTUAL NEW CLUBS CUMULATIVE



GOALS AND ACTUAL MEMBERS CUMULATIVE



DROPPED CLUBS: 19

61 CLUBS OF 130 ADDED 1 OR MORE NEW MEMBERS

GENDER DISTRIBUTION

MALE	3,115 (83.40%)
FEMALE	620 (16.60%)
NON BINARY	0 (0.00%)
PREFER NOT TO ANSWER	0 (0.00%)

DROPPED MEMBERS

[CLICK HERE FOR CUMULATIVE MEMBERSHIP DATA](#)

DECEASED	9
CLUB CANCELLED	356
OTHER	235
TOTAL	600

TOTAL FAMILY UNIT MEMBERS 1,057

FAMILY MEMBERS PAYING HALF DUES 546